



האוניברסיטה העברית בירושלים
THE HEBREW UNIVERSITY OF JERUSALEM



COLUMBIA UNIVERSITY
MEDICAL CENTER



News Release

Media Contacts:

Dov Smith, 972.54.8820860, dovs@savion.huji.ac.il

Karin Eskenazi, 212-342-0508, ket2116@cumc.columbia.edu

Maurie Perl, 212-365-7443, mperl@nyscf.org

Scientists Generate a New Type of Human Stem Cell That Has Half a Genome

The haploid stem cells may yield new genetic screening tools and therapies

JERUSALEM and NEW YORK, NY (March 16, 2016)—Scientists from The Hebrew University of Jerusalem, Columbia University Medical Center (CUMC) and The New York Stem Cell Foundation Research Institute (NYSCF) have succeeded in generating a new type of embryonic stem cell that carries a single copy of the human genome, instead of the two copies typically found in normal stem cells. The scientists reported their findings in the journal *Nature*.

The stem cells described in this paper are the first human cells that are known to be capable of cell division with just one copy of the parent cell's genome.

Human cells are considered 'diploid' because they inherit two sets of chromosomes, 46 in total, 23 from the mother and 23 from the father. The only exceptions are reproductive (egg and sperm) cells, known as 'haploid' cells because they contain a single set of 23 chromosomes. These haploid cells cannot divide to make more eggs and sperm.

Previous efforts to generate embryonic stem cells using human egg cells had resulted in diploid stem cells. In this study, the scientists triggered unfertilized human egg cells into dividing. They then highlighted the DNA with a fluorescent dye and isolated the haploid stem cells, which were scattered among the more populous diploid cells.

The researchers showed that these haploid stem cells were pluripotent—meaning they were able to differentiate into many other cell types, including nerve, heart, and pancreatic cells—while retaining a single set of chromosomes.

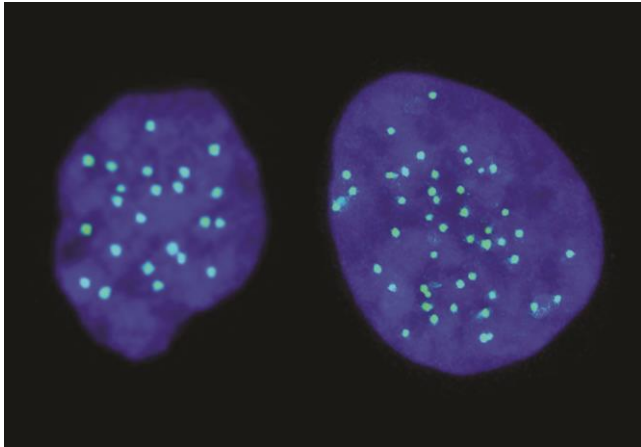
"This study has given us a new type of human stem cell that will have an important impact on human genetic and medical research," said Nissim Benvenisty, MD, PhD, Director of the Azrieli Center for Stem Cells and Genetic Research at the Hebrew University of Jerusalem and principal co-author of the study. "These cells will provide researchers with a novel tool for improving our understanding of human development, and the reasons why we reproduce sexually, instead of from a single parent."

The researchers were also able to show that by virtue of having just a single copy of a gene to target, haploid human cells may constitute a powerful tool for genetic screens. Being able to affect single-copy genes in haploid human stem cells has the potential to facilitate genetic analysis in biomedical fields such as cancer research, precision and regenerative medicine.

"One of the greatest advantages of using haploid human cells is that it is much easier to edit their genes," explained Ido Sagi, the PhD student who led the research at the Azrieli Center for Stem Cells and Genetic Research at the Hebrew University of Jerusalem. In diploid cells, detecting the biological effects of a single-copy mutation is difficult, because the other copy is normal and serves as "backup."

Since the stem cells described in this study were a genetic match to the egg cell donor, they could also be used to develop cell-based therapies for diseases such as blindness, diabetes, or other conditions in which genetically identical cells offer a therapeutic advantage. Because their genetic content is equivalent to germ cells, they might also be useful for reproductive purposes.

"This work is an outstanding example of how collaborations between different institutions, on different continents, can solve fundamental problems in biomedicine," said Dieter Egli, PhD, principal co-author of the study, and Assistant Professor of Developmental Cell Biology in Pediatrics at Columbia University Medical Center and a Senior Research Fellow at the NYSCF Research Institute and a NYSCF-Robertson Investigator.



A haploid cell with 23 chromosomes (left), and a diploid cell with 46 chromosomes (right).
Credit: Columbia University Medical Center/Hebrew University

The research, supported by The New York Stem Cell Foundation, the New York State Stem Cell Science Program, and by the Azrieli Foundation, underscores the importance of private philanthropy in advancing cutting-edge science.

The paper is titled *Derivation and differentiation of haploid human embryonic stem cells* (doi:10.1038/nature17408). The lead authors are Nissim Benvenisty and Ido Sagi, The Azrieli Center for Stem Cells and Genetic Research, The Hebrew University, Jerusalem, and Dieter Egli, Columbia University Medical Center and New York Stem Cell Foundation Research Institute. Additional authors

include Gloryn Chia, Lina Sui, and Mark Sauer of CUMC; Tamar Golan-Lev, Mordecai Peretz, Uri Weissbein and Ofra Yanuka of the Hebrew University.

The authors report no conflicts of interest.

###

[The Hebrew University of Jerusalem](http://www.huji.ac.il/en) is Israel's leading academic and research institution and is ranked among the top 100 universities in the world. Founded in 1918 by visionaries including Albert Einstein, the Hebrew University is a pluralistic institution where science and knowledge are advanced for the benefit of humankind. The Hebrew University produces one third of all civilian research in Israel, and its researchers have been awarded more than €140 million in European Research Council competitive research grants since 2007. The Hebrew University serves over 23,000 students, including 2000 international students from 85 countries. Through the generous support of the Azrieli Foundation, the Hebrew University's Azrieli Center for Stem Cells and Genetic Research is building one of the largest repositories of stem cells carrying genetic diseases and chromosomal disorders in the world, in order to study and develop cures for a wide variety of genetic disorders. For more information, please visit <http://new.huji.ac.il/en>.

[Columbia University Medical Center](http://www.cumc.columbia.edu) provides international leadership in basic, preclinical, and clinical research; medical and health sciences education; and patient care. The medical center trains future leaders and includes the dedicated work of many physicians, scientists, public health professionals, dentists, and nurses at the College of Physicians and Surgeons, the Mailman School of Public Health, the College of Dental Medicine, the School of Nursing, the biomedical departments of the Graduate School of Arts and Sciences, and allied research centers and institutions. Columbia University Medical Center is home to the largest medical research enterprise in New York City and State and one of the largest faculty medical practices in the Northeast. For more information, visit <http://www.cumc.columbia.edu> or <http://www.columbiadoctors.org>.

[The New York Stem Cell Foundation \(NYSCF\)](http://www.nyscf.org) is an independent organization founded in 2005 to accelerate cures and better treatments for patients through stem cell research. NYSCF employs over 45 researchers at the NYSCF Research Institute, located in New York, and is an acknowledged world leader in stem cell research and in developing pioneering stem cell technologies, including the NYSCF Global Stem Cell Array™. Additionally, NYSCF supports another 75 researchers at other leading institutions worldwide through its Innovator Programs, including the NYSCF – Druckenmiller Fellowships and the NYSCF – Robertson Investigator Awards. NYSCF focuses on translational research in a model designed to overcome the barriers that slow discovery and replaces silos with collaboration. For more information, visit www.nyscf.org.